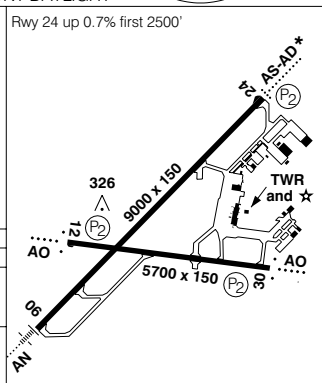
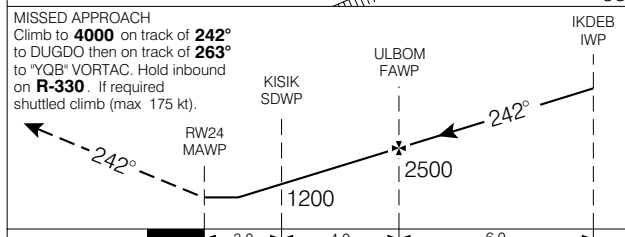
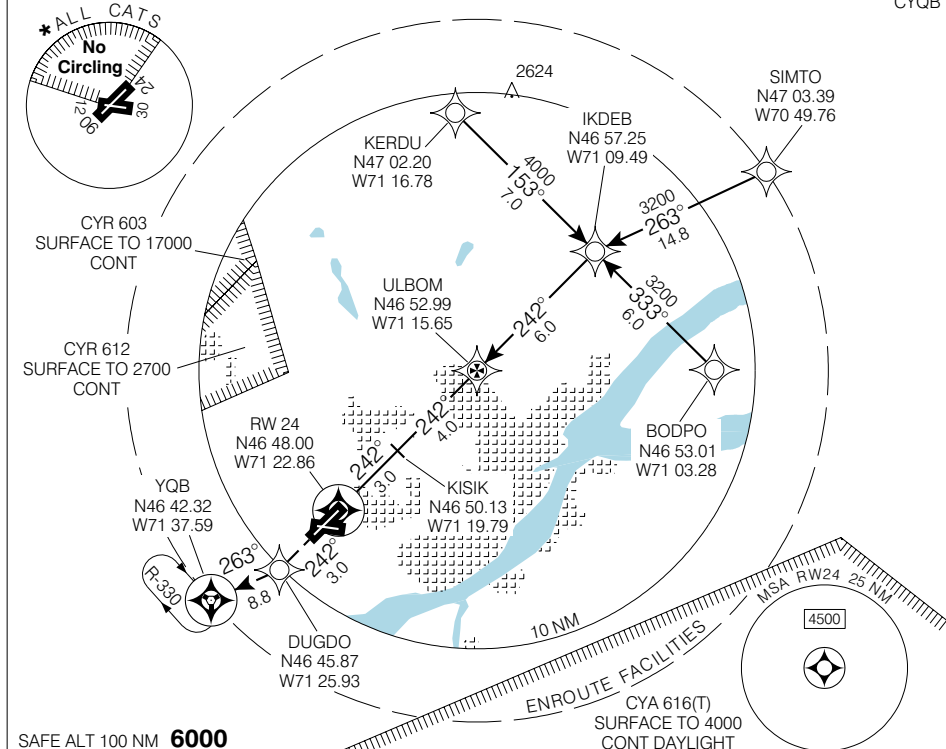


RNAV (GNSS) RWY 24

QUÉBEC/JEAN LESAGE INTL
QUÉBEC QC

ATIS 134.6 (Fr) 128.3 (Fr)	ARR/DEP 124.0 127.85 322.8	TWR 118.65 236.6	GND 121.9 250.0	ELEV 244
				TDZE 24 236

CYQB



CATEGORY	A	B	C	D
LNAV / VNAV	NOT AUTHORIZED			
LNAV	620	(384)	1 ¼	
* CIRCLING	760 (516)	1 ½	760 (516) 2	860 (616) 2

(P2) rwy 12 offset 12' to the S

Knots	70	90	110	130	150
Min:Sec					

RNAV (GNSS) RWY 24

N46 47 28 W71 23 36

VAR 18° W (2003)

QUÉBEC QC

QUÉBEC/JEAN LESAGE INTL

NAD83

EFF 13 APR 06

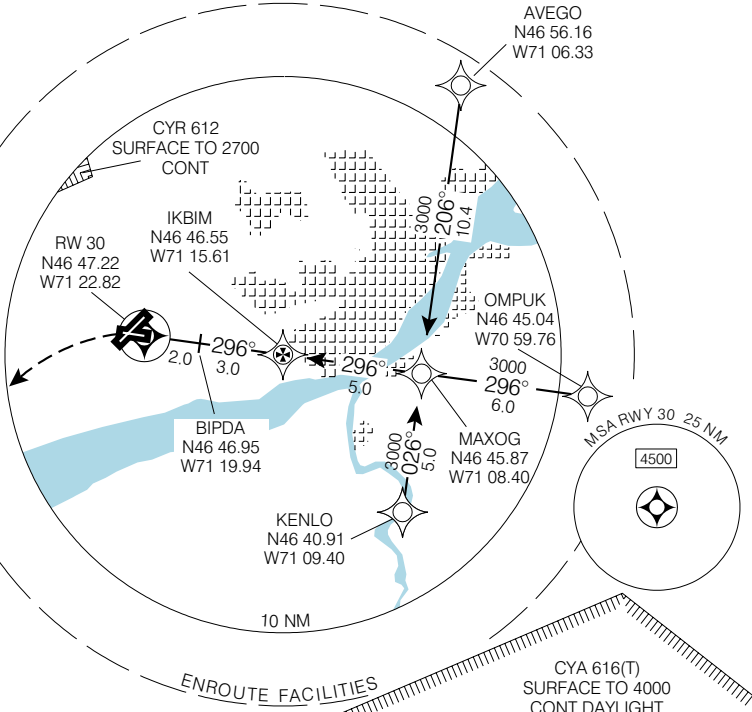
CHANGE: GPS to GNSS

RNAV (GNSS) RWY 30

QUÉBEC/JEAN LESAGE INTL
QUÉBEC QC

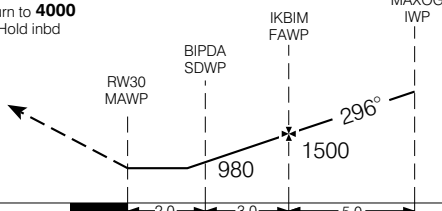
ATIS 134.6 (Eng) 128.3 (Fr)	ARR/DEP 124.0 127.85 322.8	TWR 118.65 236.6	GND 121.9 250.0	ELEV 244 TDZE 30 233
--	---	-------------------------------	------------------------------	---------------------------------------

CYQB

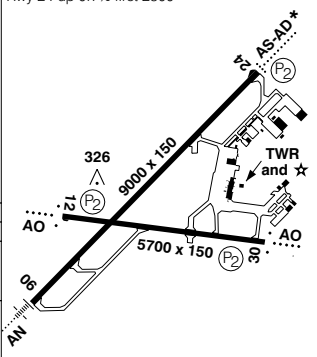


SAFE ALT 100 NM **6000**

MISSED APPROACH
LEFT climbing turn to **4000**
LEFT climbing turn to "YQB" VOR. Hold inbound on **R-330**.



Rwy 24 up to 0.7% first 2500'



CATEGORY	A	B	C	D
LNAV / VNAV	NOT AUTHORIZED			
LNAV	600	(367)	1 ¼	
★ CIRCLING	760	(516) 1 ½	760	860
			(516) 2	(616) 2

(P2) rwy 12 offset 12' to the S

Knots	70	90	110	130	150
Min:Sec					

RNAV (GNSS) RWY 30

N46 47 28 W71 23 36

VAR 18° W
(2003)

QUÉBEC QC

QUÉBEC/JEAN LESAGE INTL

NAD83

EFF 13 APR 06

CHANGE: GPS to GNSS

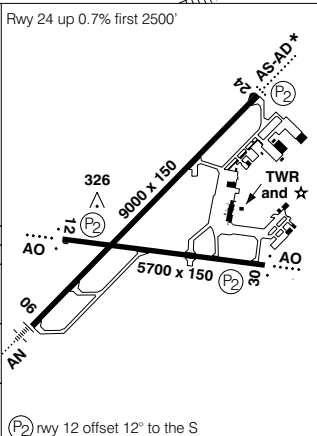
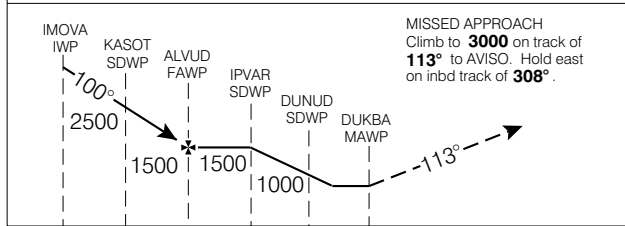
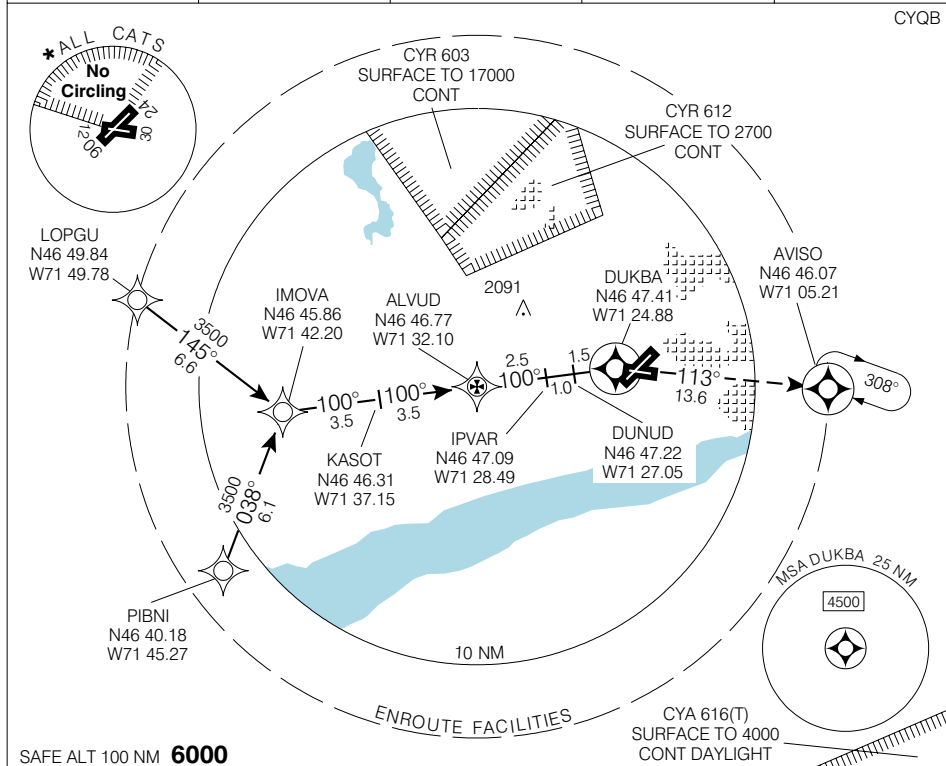
RNAV (GNSS) A

QUÉBEC/JEAN LESAGE INTL

QUÉBEC QC

ATIS 134.6 (Eng) 128.3 (Fr)	ARR/DEP 124.0 127.85 322.8	TWR 118.65 236.6	GND 121.9 250.0	ELEV 244
--	---	-------------------------------	------------------------------	-----------------

CYQB



CATEGORY	A		B		C	D	
* CIRCLING	760	(516)	1 ½	760	(516) 2	860	(616) 2

Knots	70	90	110	130	150
Min:Sec					

RNAV (GNSS) A

N46 47 28 W71 23 36

VAR 18° W (2003)

QUÉBEC QC

QUÉBEC/JEAN LESAGE INTL

NAD83

EFF 13 APR 06

CHANGE: GPS to GNSS



QUÉBEC/JEAN LESAGE INTL

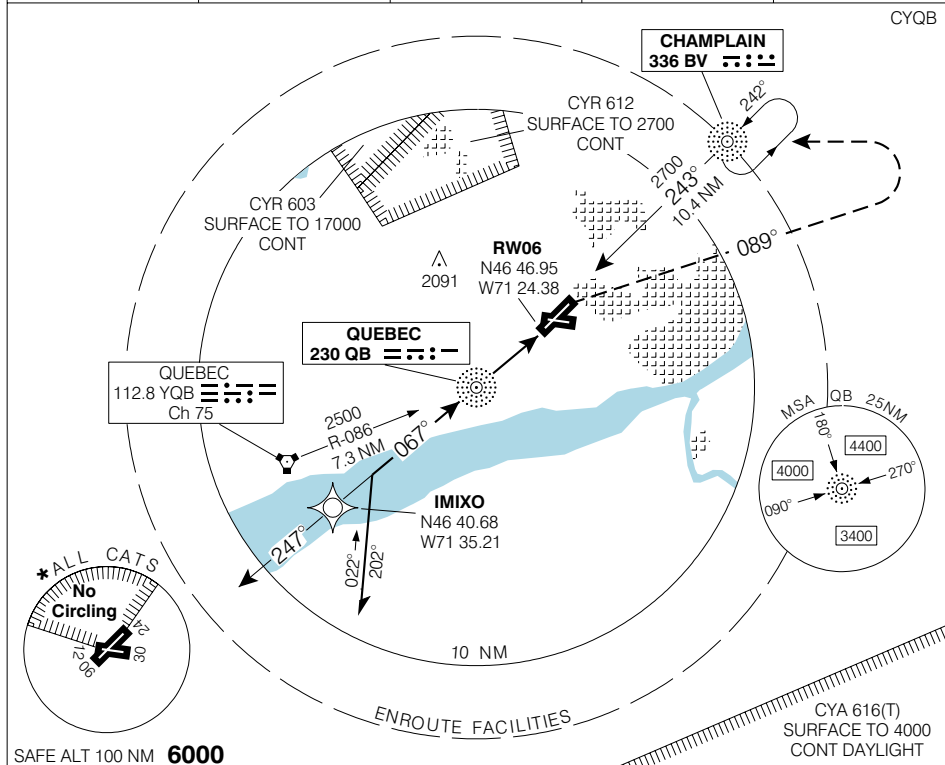
QUÉBEC QC

NDB RWY 06

Geomatics Canada

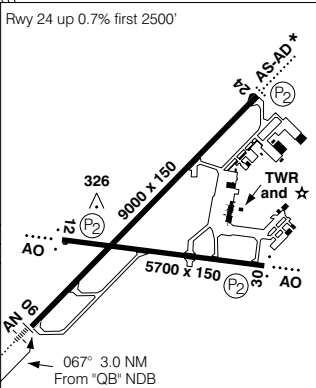
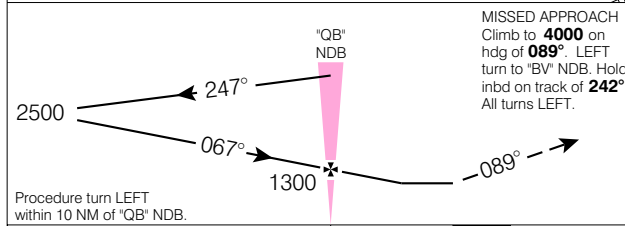
ATIS 134.6 (Eng) 128.3 (Fr)	ARR/DEP 124.0 127.85 322.8	TWR 118.65 236.6	GND 121.9 250.0	ELEV 244 TDZE 06 244
--	---	-------------------------------	------------------------------	---------------------------------------

CYQB



© 2006 Her Majesty The Queen in Right of Canada, Department of Natural Resources

Source of Canadian Civil Aeronautical Data © 2006 NAV CANADA



CATEGORY	A	B	C	D
NDB	680		(436)	1 RVR 50
* CIRCLING	760	(516) 1 ½	760	860 (516) 2 (616) 2

(P2) rwy 12 offset 12' to the S

'QB' NDB to MAP 3.0 NM

Knots	70	90	110	130	150
Min:Sec	2:34	2:00	1:38	1:23	1:12

NDB RWY 06

N46 47 28 W71 23 36

VAR 17° W

QUÉBEC QC

EFF 16 FEB 06

CHANGE: ARR/DEP

QUÉBEC/JEAN LESAGE INTL

NAD83



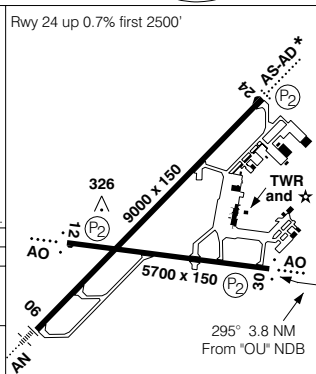
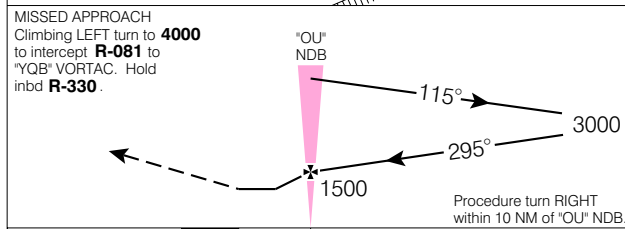
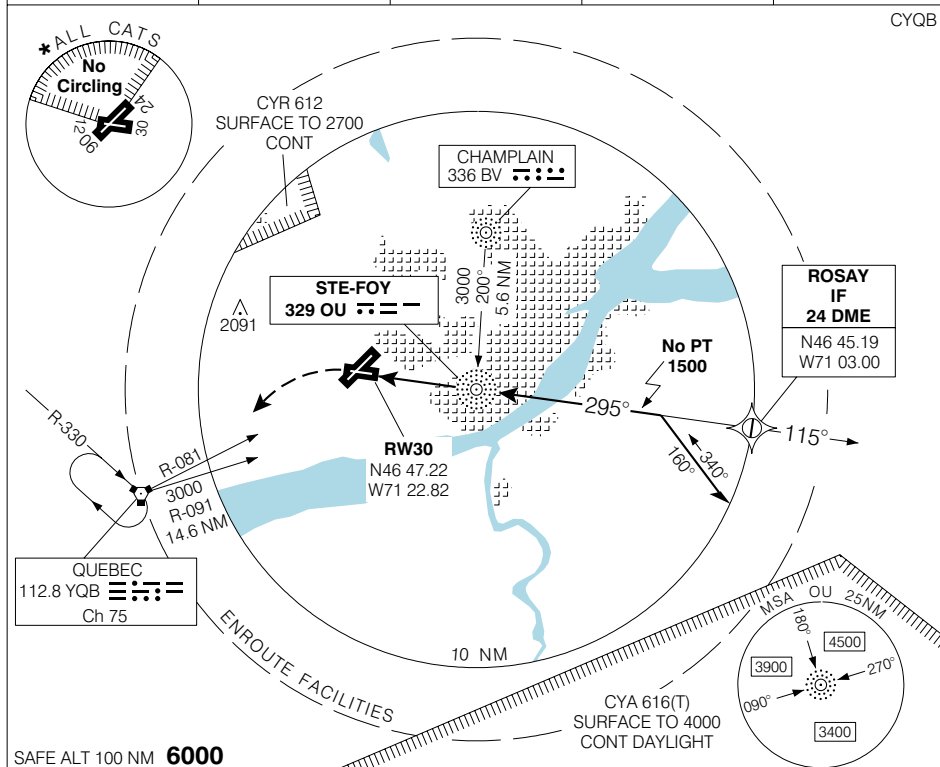
QUÉBEC/JEAN LESAGE INTL
QUÉBEC QC

NDB RWY 30

Geomatics Canada

© 2006 Her Majesty The Queen in Right of Canada, Department of Natural Resources
Source of Canadian Civil Aeronautical Data © 2006 NAV CANADA

ATIS 134.6 (Eng) 128.3 (Fr)	ARR/DEP 124.0 127.85 322.8	TWR 118.65 236.6	GND 121.9 250.0	ELEV 244 TDZE 30 233
--	---	-------------------------------	------------------------------	---------------------------------------



CATEGORY	A	B	C	D	
NDB	700		(467)	1 1/2	
* CIRCLING	760	(516)	1 1/2	760 (516) 2	860 (616) 2

(P2) rwy 12 offset 12' to the S

"OU" NDB to MAP 3.8 NM					
Knots	70	90	110	130	150
Min:Sec	3:15	2:32	2:04	1:45	1:31

NDB RWY 30

N46 47 28 W71 23 36

VAR 17° W

QUÉBEC QC

QUÉBEC/JEAN LESAGE INTL

EFF 16 FEB 06

CHANGE: ARR/DEP

NAD83



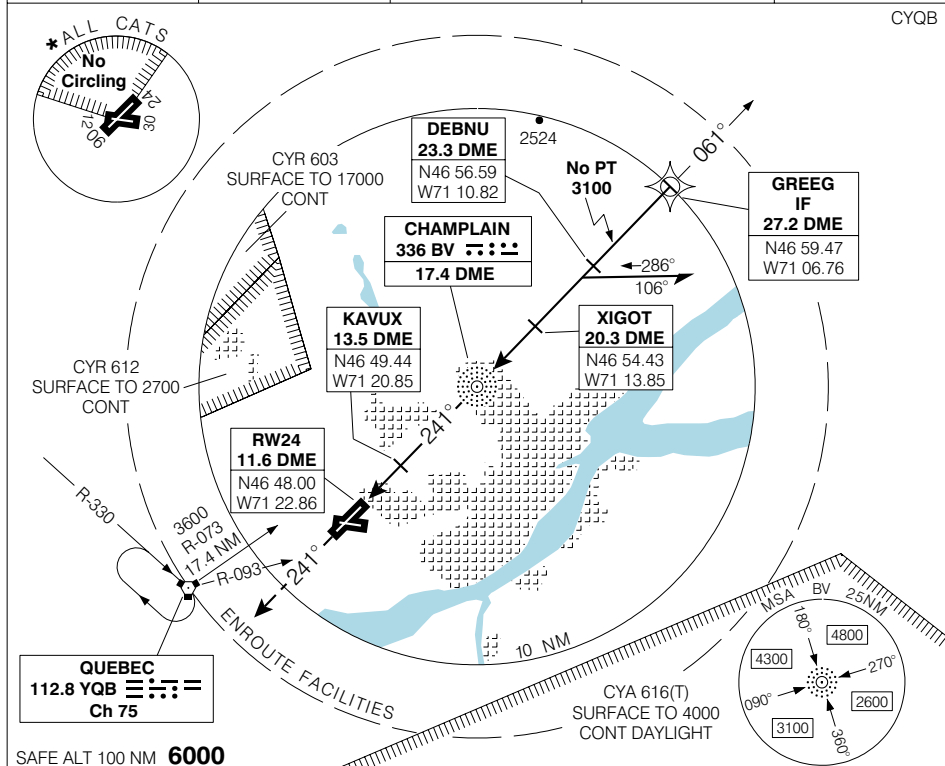
QUÉBEC/JEAN LESAGE INTL
QUÉBEC QC

NDB/DME RWY 24

Geomatics Canada

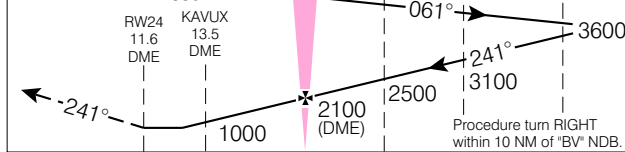
CYQB

ATIS 134.6 (Eng) 128.3 (Fr)	ARR/DEP 124.0 127.85 322.8	TWR 118.65 236.6	GND 121.9 250.0	ELEV 244 TDZE 24 236
--	---	-------------------------------	------------------------------	---------------------------------------

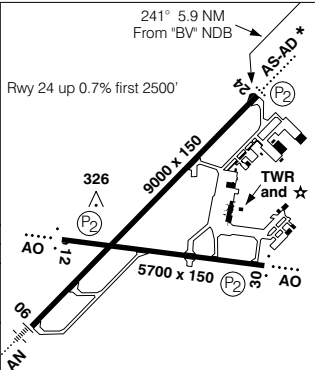


SAFE ALT 100 NM **6000**

MISSED APPROACH
Climb to **4000** on track of **241°** to intercept **R-093** to "YQB"
VORTAC. Hold inbd **R-330**.



CATEGORY	A	B	C	D
NDB/DME	700	(464)		1 ½
* CIRCLING	760 (516)	1 ½	760 (516)	860 (616) 2



(P2) rwy 12 offset 12° to the S

"BV" NDB to MAP 5.9 NM				
Knots	70	90	110	130 150
Min:Sec	5:03	3:56	3:13	2:43 2:22

NDB/DME RWY 24

EFF 16 FEB 06

CHANGE: ARR/DEP

N46 47 28 W71 23 36
VAR 17° W

QUÉBEC QC

QUÉBEC/JEAN LESAGE INTL

NAD83



QUÉBEC/JEAN LESAGE INTL
QUÉBEC QC

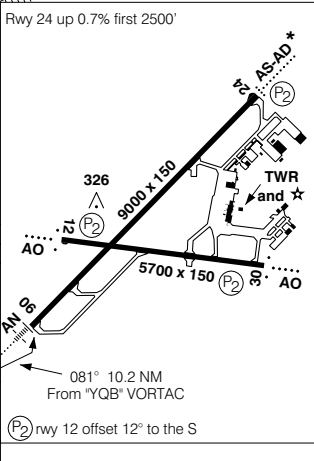
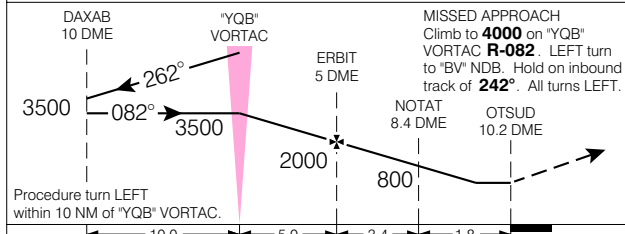
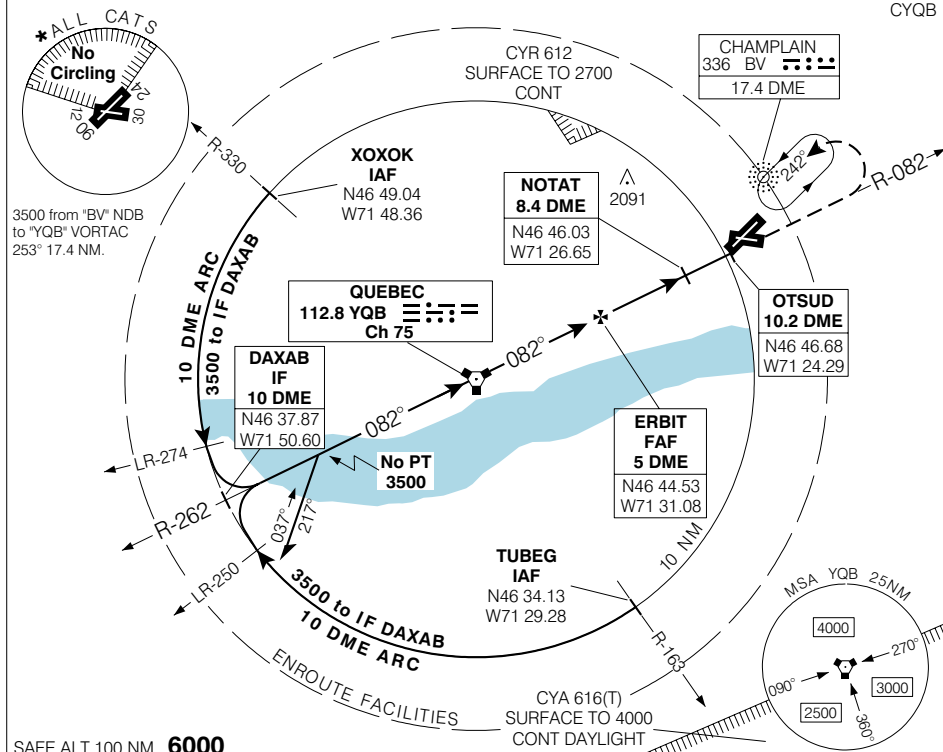
VOR/DME RWY 06

Geomatics Canada

QUÉBEC QC

ATIS 134.6 (Eng) 128.3 (Fr)	ARR/DEP 124.0 127.85 322.8	TWR 118.65 236.6	GND 121.9 250.0	ELEV 244
				TDZE 06 244

CYQB



VOR/DME RWY 06

EFF 16 FEB 06 CHANGE: ARR/DEP

N46 47 28 W71 23 36

VAR 17° W QUÉBEC QC
QUÉBEC/JEAN LESAGE INTL
NAD83

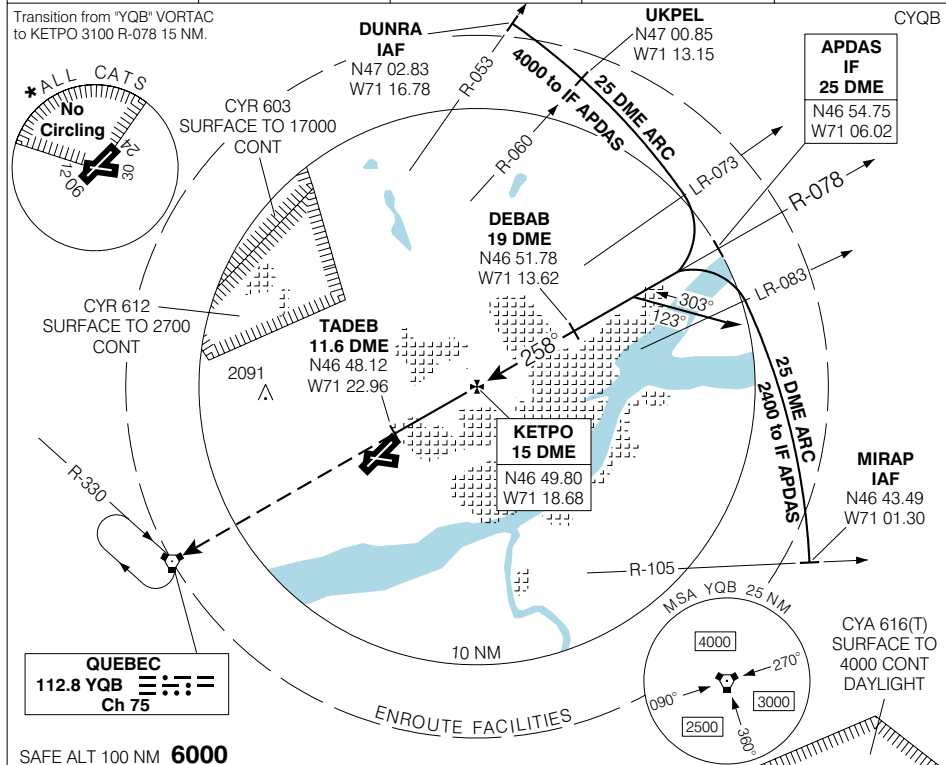


VOR/DME RWY 24

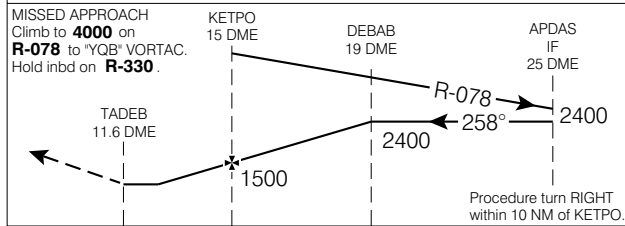
Geomatics Canada

ATIS 134.6 (Eng) 128.3 (Fr)	ARR/DEP 124.0 127.85 322.8	TWR 118.65 236.6	GND 121.9 250.0	ELEV 244 TDZE 24 236
--	---	-------------------------------	------------------------------	---------------------------------------

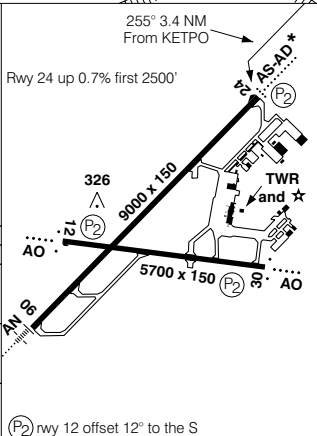
Transition from "YQB" VORTAC to KETPO 3100 R-078 15 NM.



SAFE ALT 100 NM **6000**



CATEGORY	A	B	C	D
VOR/DME	820	(584)	1 ¾	
* CIRCLING	820	(576) 1 ¾	820	860
			(576) 2	(616) 2



Knots	70	90	110	130	150
Min:Sec					

VOR/DME RWY 24

N46 47 28 W71 23 36

VAR 17° W

QUÉBEC QC

EFF 16 FEB 06

CHANGE: ARR/DEP

QUÉBEC/JEAN LESAGE INTL

NAD83



QUÉBEC/JEAN LESAGE INTL
QUÉBEC QC

ILS RWY 06

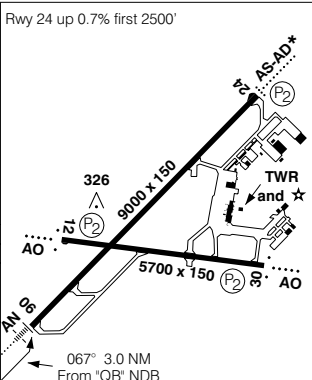
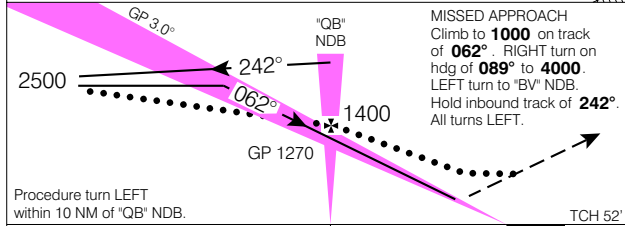
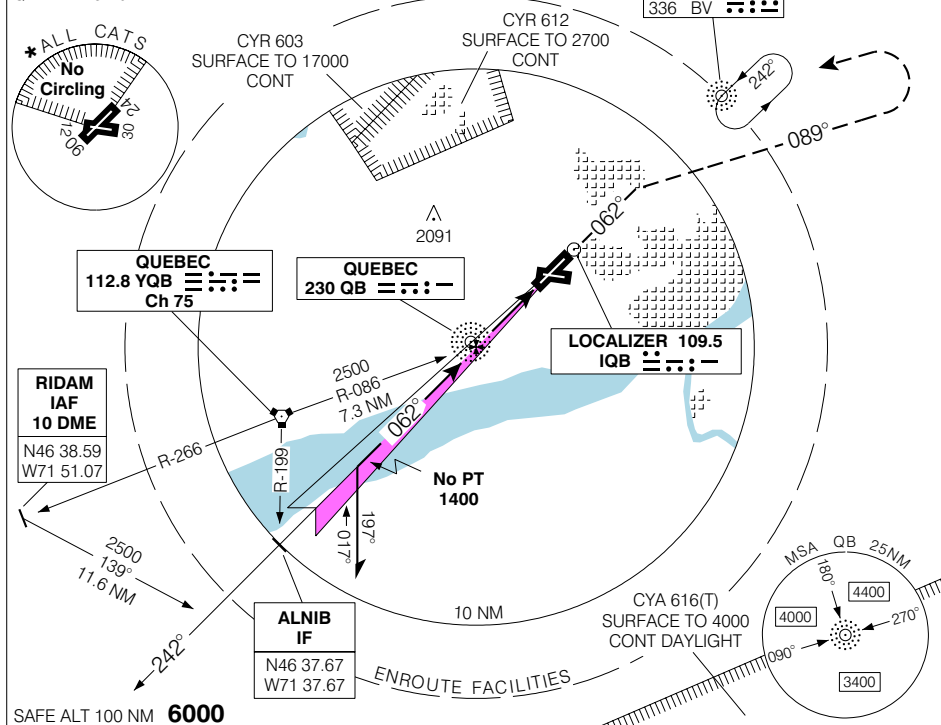
Geomatics Canada

© 2006 Her Majesty The Queen in Right of Canada, Department of Natural Resources

Source of Canadian Civil Aeronautical Data © 2006 NAV CANADA

ATIS 134.6 (Eng) 128.3 (Fr)	ARR/DEP 124.0 127.85 322.8	TWR 118.65 236.6	GND 121.9 250.0	ELEV 244 TDZE 06 244
--	---	-------------------------------	------------------------------	---------------------------------------

2700 from "BV" NDB to
"QB" NDB 243° 10.4 NM.



CATEGORY	A	B	C	D
ILS	444	(200)	½ RVR 26	
LOC	620	(376)	1 RVR 50	
* CIRCLING	760	(516) 1 ½	760	860
			(516) 2	(616) 2

(P₂) rwy 12 offset 12' to the S

"QB" NDB to MAP 3.0 NM				
Knots	70	90	110	130 150
Min:Sec	2:34	2:00	1:38	1:23 1:12

ILS RWY 06

EFF 16 FEB 06 CHANGE: ARR/DEP

N46 47 28 W71 23 36

VAR 17° W QUÉBEC QC

QUÉBEC/JEAN LESAGE INTL

NAD83

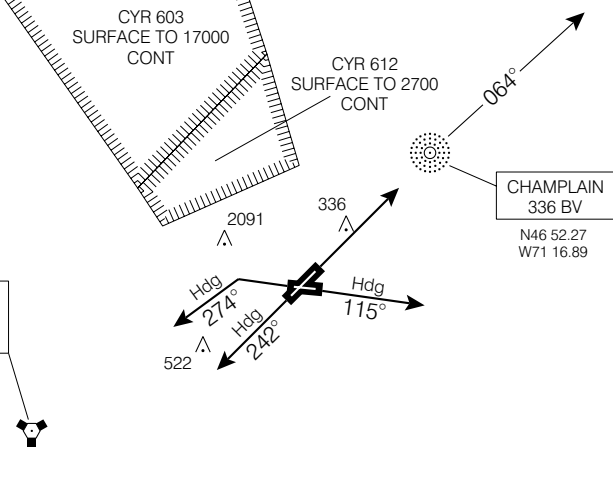
SID(VECTOR)

QUEBEC TWO DEP (CYQB 2.)



QUÉBEC/JEAN LESAGE INTL
QUÉBEC QC

VOT 115.7
ATIS 134.6(Eng) 128.3(Fr)
GND 121.9 250.0
TWR 118.65 236.6
DEP 124.0 127.85 322.8



DEPARTURE CLIMB RATE V/V (FPM)

GROUND SPEED	90	120	140	160	180	200	250	300
290 FT/NM	440	580	680	780	870	970	1210	1450

Chart not to scale

DEPARTURE ROUTE DESCRIPTION

- Rwy 06:**
 - Climb to "BV" NDB then track 064° outbound or on assigned heading by ATC for radar vectors.
 - All acft maintain 4000 ASL or as assigned.
- Rwy 12 :**
 - Climb on heading 115° or as assigned by ATC for radar vectors.
 - Jet acft maintain 4000 ASL or as assigned. Non-jet acft maintain 3000 ASL or as assigned.

Do not proceed in north sector between Rwys 06 and 30 before reaching 1600.
- Rwy 24 :**
 - Climb on heading 242° or as assigned by ATC for radar vectors.
 - Jet acft maintain 4000 ASL or as assigned. Non-jet acft maintain 3000 ASL or as assigned.

Do not proceed in north sector between Rwys 06 and 30 before reaching 1600.
- Rwy 30:**
 - Requires a minimum climb gradient of 290 ft/NM to 1600.
 - Maintain hdg 295° until 660 then climbing left turn hdg 274° or as assigned by ATC for radar vectors.
 - Jet acft maintain 4000 ASL or as assigned. Non-jet acft maintain 3000 ASL or as assigned.

COMMUNICATION FAILURE

- Select transponder mode C/3 code 7600.
- Climb to flight planned altitude 3 minutes after take-off, and
- Proceed on course 3 minutes after selecting 7600.

QUEBEC TWO DEP (CYQB 2.)

EFF 16 FEB 06

CHANGE: DEP

QUÉBEC QC
QUÉBEC/JEAN LESAGE INTL

NAD83



AERODROME CHART

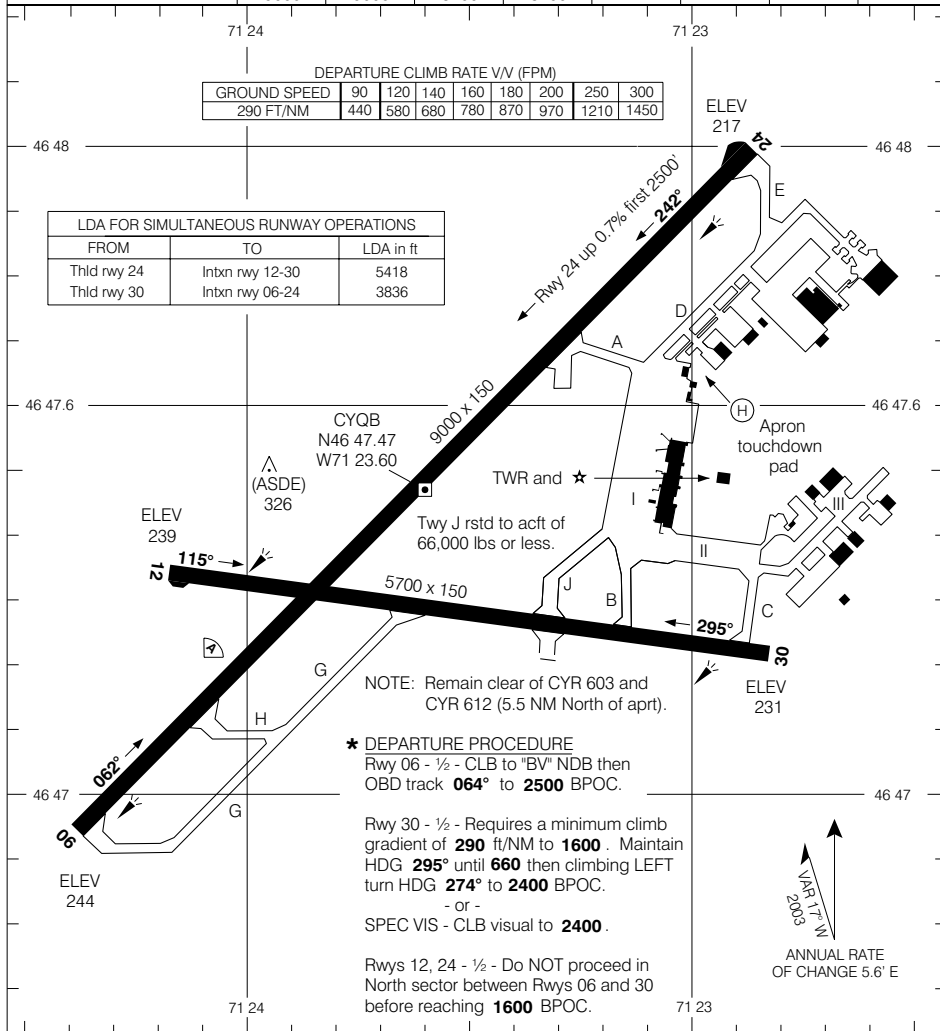
Geomatics Canada

VOT 115.7	ATIS 134.6 (Eng) 128.3 (Fr)	GND 121.9 250.0	TWR 118.65 236.6	DEP 124.0 127.85 322.8
---------------------	--	------------------------------	-------------------------------	-------------------------------------

DECLARED DISTANCES					
	06	24	12	30	
TORA	9000	9000	5700	5700	
TODA	10,000	10,000	5700	5700	
ASDA	9000	9000	5700	5700	
LDA	9000	9000	5700	5700	

DEPARTURE CLIMB RATE V/V (FPM)								
GROUND SPEED	90	120	140	160	180	200	250	300
290 FT/NM	440	580	680	780	870	970	1210	1450

LDA FOR SIMULTANEOUS RUNWAY OPERATIONS		
FROM	TO	LDA in ft
Thld rwy 24	Intxn rwy 12-30	5418
Thld rwy 30	Intxn rwy 06-24	3836



TAKE-OFF MINIMA

All rwys: *

SCALE IN FEET

1000 0 1000 2000

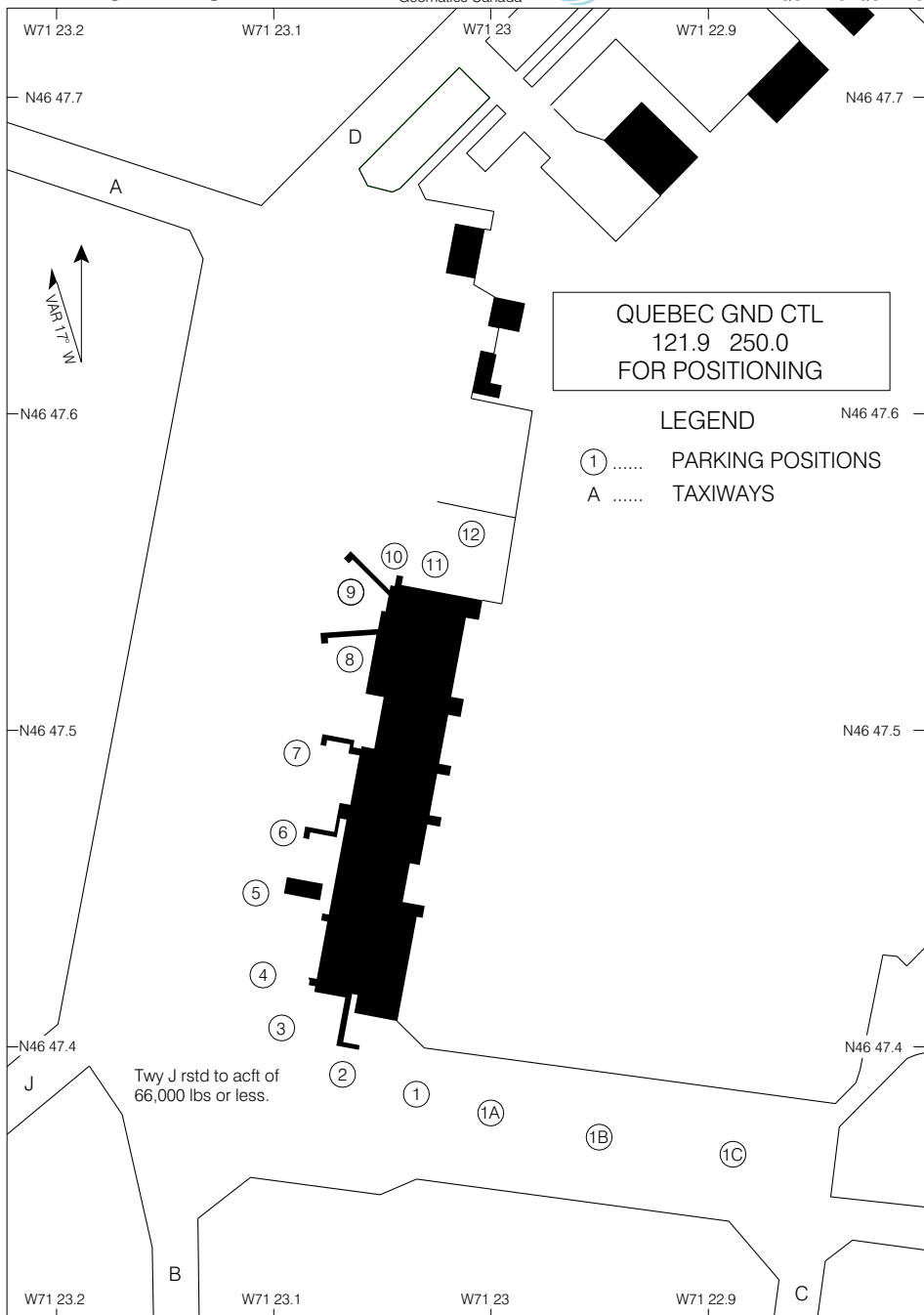
© 2006 Her Majesty The Queen in Right of Canada, Department of Natural Resources

Source of Canadian Civil Aeronautical Data © 2006 NAV CANADA



QUEBEC/JEAN LESAGE INTL
QUÉBEC QUEBEC

PARKING AREAS



© 2004 Her Majesty The Queen in Right of Canada, Department of Natural Resources

Source of Canadian Civil Aeronautical Data © 2004 NAV CANADA

PARKING AREAS

EFF 19 FEB 04

CHANGE: 2003 A/D Mag Var

QUEBEC/JEAN LESAGE INTL
QUÉBEC QUEBEC

NAD83